

Hitcham and Taplow Society

Newsletter 116: Autumn 2021
£3.50 to non-members



BOAT HIRE
01932 232433
CY11C16602

www.taplowsociety.org.uk

Hitcham and Taplow Society

Formed in 1959 to protect Hitcham, Taplow and the surrounding countryside from being spoilt by bad development and neglect.

President: Eva Lipman
Vice President: Fred Russell
Acting Chairman: Roger Worthington
Treasurer: Robert Hanbury
Secretary: Roger Worthington
Committee: Andrew Findlay, Charlie Greeves, Robert Harrap, Rupert Sellers, Nigel Smales, Jonathan Specktor, Jacqueline Turner.
Newsletter Editor: Not-the-editor team
Newsletter Production: Andrew Findlay

Contact Address: HTS, Littlemere, River Road, Taplow, SL6 0BB
secretary@taplowsociety.org.uk
07787 556309

Cover picture: Swan Upping (Jacqueline Turner)

Editorial

Dare we hope that Covid restrictions are behind us? The winter illness season still awaits us and perhaps the best we can expect is that Covid simply settles to be seen as another flu-like illness with regular seasonal jabs available. On our own patch we held the first in-person committee meeting for a long while in October and have booked the Village Hall for our AGM on 3rd December, so fingers crossed. And surely we will have the Village Green Party back in 2022 on June 18th.

Sadly Nigel kept his word and we are in search of a new editor. This issue is perforce a committee affair and as such there may be something of the camel about it rather than the racehorse standard we have become used to over many years. Applicants please.

Perhaps the proudest moment for Taplow this year has been the Olympic double gold medal success of Tom Dean in the 200m freestyle swimming. Congratulations to Tom and to mum Jacque Hughes for bringing him up by the river.

We regret that there are further delays to getting the World War 2 names added to the Village War Memorial. Adrian Powell suffered further injuries with a consequent backlog of work on his recovery but we feel it better to wait on his skills and previous involvement with the Memorial rather than search for another stonemason.

AGM

20:00 on 3rd December 2021

Taplow Village Centre

www.taplowsociety.org.uk

Acronyms

BUA is Buckinghamshire Unitary Authority. TPC is Taplow Parish Council. SBDC is South Bucks District Council (now defunct)

Nigel is Not-the-Editor Now



Nigel Smales

Not quite sure whether Nigel volunteered as editor or simply failed to step back quickly enough at the critical moment but he rapidly made the job his own. For 8½ years and 17 issues since his first Newsletter, number 100, in the autumn of 2013 (we must take care to be accurate with everything if it is to pass muster with Nigel) he has shaped and filled our pages.

Taking seriously the Society mantra of Community, Conservation and Heritage, over many issues he has amused and informed us with the backgrounds, histories and families that have shaped Taplow into being the remarkable place it is today. His passion as our pre-eminent local historian lent authority, precision and relevance to many interwoven stories from the local great families and anecdotes from far flung corners of the globe.

This knowledge was not just offered as history but had great relevance for today in Taplow. Laychequers Meadow? Rutland Close? Not names dreamt up by Berkeley Homes or South Bucks Council but as genuinely relevant names from the fields and persons occupying the site in the past and offered up by Nigel with impeccable records of justification. As editor he was (is) of course too modest to blow his own trumpet.

The names of the fallen of World War 2 (published in NL 113 and alas still awaiting their inscription on the memorial) were carefully and thoroughly researched by Nigel to give confidence that the record was complete and detailed.

History starts from today and we have also been entertained by the comings and goings of village life – Nigel was camera man as well as reporter – that become tomorrow's history. If Nigel was not there perhaps the event was less important?

Another clear thread that has run through his editorship has been the importance of following the political and administrative functions that we hand authority over to, for they can strongly affect our ability to manage our community as we wish. National Planning legislation and Local Plans are all necessary but their implementation and execution can easily be second rate or plain wrong. Nigel threw a light on these activities and figuratively held a torch to the feet of the wayward with a belief that those who represent us must be held to account.

It is entirely wrong to say that Nigel has retired. He has simply stepped down as editor, having given an enormous amount of time, energy and enthusiasm to do a job he sees as valuable. It is to be hoped that we see articles from him in future issues so that we do not miss his unique style and trademark technicolour explanatory diagrams.

Communities only exist by virtue of the efforts of their residents and it is up to the community of Taplow that the efforts reflected in the pages of the Newsletter continue. Nigel is watching.

Roger Worthington

Cliveden update

Mark Bradshaw has been a friend to the Society during his tenure as National Trust director at Cliveden. He offered use of Cliveden facilities for our committee meetings and gave an excellent talk at our 2019 AGM. We wish him well in his new role as Head of Let Estate with the central team and we welcome Robert Miles in his stead.

The Pilgrim

Being identified as the Pilgrim by Nigel highlighted the sufferings of anyone trying to make sense of our planning system, if indeed system is the right word.

Recent issues have reported on a blizzard of planning legislation proposals, mostly stemming from the Dominic Cummings era. Of these the extension of Permitted Development Rights to allow almost any high street shop to be converted to residential has now passed into law but there are rays of hope on the horizon in respect of the horrendous 'Planning for the Future' proposals. Michael Gove has been posted as a trouble shooter as Levelling Up, Housing and Communities minister with a reputation for thinking differently. Fingers crossed. He is likely to abandon the 300,000 new homes a year target as rather irrelevant. Statistics indicate a surplus of housing stock. The correct measure of housing growth 'the dwelling stock' should include house to multiple flats conversions. Between 1996 and 2018 this dwelling stock grew by an average of 168,000pa. while households only grew by 147,000pa. So in other words the housing problem is one of pricing, not total availability. New house building would have to be on a vast scale to seriously impact the price levels, 300,000pa. wouldn't cut it. (Figures from *The Economist*).

Updates

The Marsh Lane Challens's Chicks application for a residence was rejected by the Planning Committee. This is interesting as the council had earlier granted a three year permission for

temporary accommodation. As rather expected, the applicant has appealed.

Happily the Little Karoo Farm site has been greatly tidied up, a mini golf facility is up and running at Odds Farm and two houses at the Mill Lane roundabout have reverted from lodgings to private residences, having been a home from home for many workers on the Mill Lane site.

Refusals have included an extension at Stockwells on Conservation Area grounds and a gross over-development application at Larchwood House (née Cedar Cottage) north of Cliveden that was withdrawn as was a tiny house in the backyard of Cornerways on River Road. Lamont House in River Road has outline permission for a rebuild but is struggling to get a detailed design approved.

On Mill Lane we still await much sign of the promised pub but happily the Old Boathouse on the Gage development may be making progress. It was required to be raised en bloc to satisfy flooding criteria but now can be dismantled and reassembled, a less daunting task.

Green Springs in Marsh Lane looks likely to clear permission to replace a very modest bungalow with a modern house with basement parking after a long history of permitted development rights applications, some approved, some rejected, to alter the existing building. The planning system is indeed tortuous.

A conversion of the metal Downlands Barn on Hitcham Lane to a residence has been approved but see the discussion around Victoria Cottage that follows. As we write a subsequent

Roger Worthington



Downlands Barn - becoming a Des Des?

application has been made to demolish it and rebuild. If permitted this would be a travesty of the legislation that was intended to make better use of abandoned barns.

Of Special Interest



How Small? - Victoria Cottage c1950

An extension of Victoria Cottage at the top of the High Street went to the planning committee to clarify how expansion since a 1948 baseline is assessed in absence of a clear planning history and how our councillors view the protection of Conservation Area features. The planning committee hearing revealed something that I am sure most of us are unaware of. When an objection is made that states what people have done or said, this is treated as 'hearsay' and ignored as not being evidence. If you want the council to take it into consideration you have to get your statement notarised, which apparently then makes it evidence. The initial recommendation for Victoria Cottage was to approve the application but subsequent to the resubmitting of objections as affidavits the officer has changed his recommendation to **reject**. Perhaps the decision on Downlands Barn (above) might have differed if this had been better known as there was a distinction as to whether it was 'agricultural' or 'equine' in its previous use.

Other Matters

The strong local opposition in Bourne End to the developments at Hollands Farm led to the three Conservative candidates at the General

Election being ousted by independents standing against the development. So local democracy can still be heard. We hope the powers-that-be hear the voice of the people, despite the apparent determination of the government to greatly reduce the ability of both councils and individuals to influence and object to developments.

Parking proposals around Taplow Station trailed in NL114 are expected to return. Authorities continue to turn a deaf ear to any assessment of a larger car park while promoting the importance of the Elizabeth Line. Some contradiction there? Are the thousands of houses expected in an expanded Beaconsfield going to produce commuters to Taplow station down one of the narrowest lanes in the area?

BUA is in full swing with the production of a new Local Plan for the whole of the Unitary area. We need to discover to what extent it will simply fold in the withdrawn SBDC/CC plan or more bravely take a fresh look. The uncertain nature of anticipated legislative changes makes their job hard.

A *Town and Parish Council Charter* 20 page document was published by BUA, to be signed by the councils. It was met with widespread derision as being content free. A Charter nominally grants rights but the charter contains no such empowerment. It does not have defined escalation processes for unsatisfactory response, let alone any calling to account. This is probably to be expected from a BUA that appears very averse to any substantive form of Localism. Less than dramatic changes offered include changing its name to *All Councils Charter* and removing the request to sign it. So that's all right then.

Better news is that BUA has announced that it is setting up a register of Local Heritage Assets – things which are short of being Listed but that are of local value. Our Neighbourhood Plan Team looked at the need for this a while ago but at that time SBDC had no such structure we could use. Taplow has many buildings and locations of this nature (see NL115). We look to work with this emerging register to help protect some of our valued heritage.

Roger Worthington

Taplow on Thames

When thinking of Taplow one perhaps instinctively thinks of the village, with its church, pub, school and village hall, or perhaps of the great estates further north. However there is much more to the parish than that. We have our new Mill Lane development which is already settling in and offering new dynamics and contributions to our local life.



Nigel Smales

Elysium Kayaks

In particular, south of the river is Taplow on Thames, a thriving riparian community with a rich daily life. Just immediately north of the A4 bridge is the only remaining public access to the Thames for several miles for launching boats and this public access continues south of the bridge. An interesting by-product of this is that most river activities claimed by Maidenhead are in fact in Taplow – the Maidenhead Rowing Club is here with the Maidenhead Regatta and our new Olympic hero Tom Dean is of course from Taplow. Having the Thames outside his front door must have been a great early contributor to his success. Maidenhead built all over its flood plain up to the river edge so that even the flood relief channel had to be built in Taplow. This was of course greatly to our benefit finally, giving us the beautiful Jubilee 'river' amenity.

River Road is busy all year with people of all shapes and sizes using it as the Thames Path. Runners, serious walkers, strollers, dog walkers, fun runs, exercise groups, horses (most of the road is now formally a bridleway), cyclists all jostling for space and making way for resident cars. Although this sounds like bedlam it is oddly entertaining for us residents and nothing like the annoyance it would be if it were a regular road with motor traffic.

The river itself generates endless entertainment for us, from the mass swim from Boulter's lock to Bray, through every form of boat from inflated inner tubes and surf boards, to the largest party boats that can fit through the locks and some very grand river cruisers. In August the Elysium event saw a convoy of kayaks come down the river as a fund-raising event in support of caring for ex-servicemen with mental health problems. After a lockdown absence it was also good to see the Swan Upping river flotilla again.

We are also privileged with an endless parade of birds. Our swans on the island successfully raised 7 cygnets this year. A heron and cormorants are in regular attendance in addition to an inexhaustible supply of geese and ducks and we have also seen kingfishers.

Eccentricities this year included the arrival of a convoy of amphibious cars, sailing down the river, mooring up below the railway bridge before continuing on to Bray, where they came ashore and drove off.



Ken Blakeslee

The star event of the year has to have been the return home of Tom Dean, our Olympic champion. The Gaiety Row houses decorated the terrace with flags and streamers, held an informal street party and closed the big white gates to formally welcome him home. After passing the terrace he joined a huge family party at his mother's house. A truly worthy successor to our Tim Anderson (NL 109), who competed in the 1952 Olympics in the pole vault after winning gold at the British Empire Games.

Idylls have their attendant problems however. The grassy river bank just south of the Brunel Bridge is public land and suffered greatly during the summers of lockdown. As an accessible open space it has been the scene of rioting, fighting, knifings, drug use and general very anti-social behaviour with the police being regularly called



Anne Fairweather

Tom's Welcome

out. Discussions have taken place with the police and the council as to what may be done. This would be easier if River Road was a normal road but it has in fact at least four parts in different ownership, making any enforcement an administrative nightmare. This tangle is worth an article in its own right.

The closeness of the road to the river bank has and is producing difficulties. Residents of the Gaiety Row terrace park cars outside, leaving a rather narrow lane for access to the properties south of the Brunel Bridge, right on the river edge. The road was reconstructed in the mid-nineties with reinforcements to the bank to withstand a 10 ton loading. However, traffic has greatly intensified in the last decade and with much construction work on houses beyond the bridge heavy lorries are causing subsidence. This part of the road is owned by the terrace houses of Gaiety Row but in a great feat of community spirit all the houses in the private road have split the reconstruction costs equally.

Our social calendar was rudely interrupted by Covid but is now in recovery.

The great social croquet league hosted by Brian Smith at Fairview with 20-30 competitors and barbeque was lost but happily Sam Foyle at White Place has now picked up the baton with a successful event in September.



Ken Blakeslee

Wendy Herman from Swan Support with the Swan Uppers

The Canasta league previously hosted by Rob and Wendy Lawson at Crosswinds has also resurfaced.

Most recent was the return of the supper club at the Maidenhead Rowing Club, where River Road residents and friends dine as a social event (raising nearly £15,000 for kitchen equipment so far). A record number of 34 attended in September, all eager to shake off the restrictions of the pandemic.

Roger Worthington



Roger Worthington

Supper Club at the Rowing Club

Old Sea Dog

Earlier this year as we said farewell to H.R.H. The Duke of Edinburgh, I was reminded of our own popular sailor and late resident, Commander John Husher, Royal Canadian Navy, Retired. John and his equally well regarded wife, Betty (Elizabeth), moved into Cedar Chase from Wraysbury in the late 1980s, bringing with them their cuddly Airedale terrier, Slug. (That's why we got our Airedale, Sam! They made a great pair).

Like many Canadians John and Betty loved Britain, and loved living here in Taplow, soon becoming popular figures. They were active locally and in their church, Our Lady of Peace in Burnham, and John was also a school governor. It was therefore inevitable that he would be cajoled into being Chairman of the Cedar Chase Residents' Society, a task he was happy to take on. Among his many interests he also became a tour guide in St. George's Chapel in Windsor Castle. He kindly gave me a personal tour once, and I also joined him at a magical concert of music there.

John was instrumental in getting War Graves memorials put with the graves of Canadian soldiers buried in the churchyard of St. Nicolas. They had died in the Canadian Red Cross hospital, in the grounds of Cliveden. That hospital was eventually taken on by the NHS but later abandoned, before being demolished in the 1990s.

Both John and Betty served at sea in WW2. John also served later in Korea.

Betty was one of the few women in the R.C.N. to go to sea on active service at that time. I believe she decrypted vital signals. She was typically modest about this and thought it quite a normal thing to do. When John was at sea after the war she brought up their four children, (they sadly lost a daughter, as an adult, to cancer). Betty was very kind and caring but didn't suffer fools gladly.



HMCS Haida



Commander John Husher, RCN

John's ship stood off shore at the D-Day landings and at some point he was 'Mentioned in Despatches'. Later he went on to escorting the Arctic Convoys taking vital supplies to the Russians. I have read the history of that epic time. Apparently it was hellish, facing a determined enemy in unbelievably bitter weather and wild terrible seas. Many ships and lives were lost in the appalling conflict. Not long before he died, in his seventies, in 1996, John belatedly received a medal from the Russians in recognition of his service.

In June 1994, on the 50th Anniversary of D-Day, he took a bus load of Veterans over to the Normandy commemorations.

After the war John's ship was visited by the then Prince Philip. I can imagine he got on very well with John. Many Pink Gins flowing in the Wardroom that day!

The Tribal Class destroyer *Haida* which John had commanded from 1958 to 1960 became a permanent memorial in Halifax, Ontario. A bit like *H.M.S. Belfast* on the Thames. He was very proud of that.

John finished his career as a naval officer in the Diplomatic Service.

After John's death Betty stayed on in Cedar Chase with her little Border Terrier, Hamish, until she developed dementia and had to move into care. When she eventually passed away her family brought her back to Taplow, where she was laid to rest with John in the churchyard here.

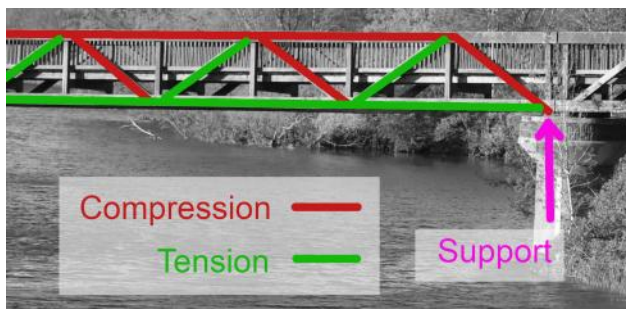
Tony Lamburn

Broken Footbridge

The wooden footbridge across the Jubilee River at Mill Lane has failed. Two vital structural members are broken, one side of the bridge has dropped by about 100mm and it is still moving. There is now a risk that the bridge will collapse into the river under its own weight.

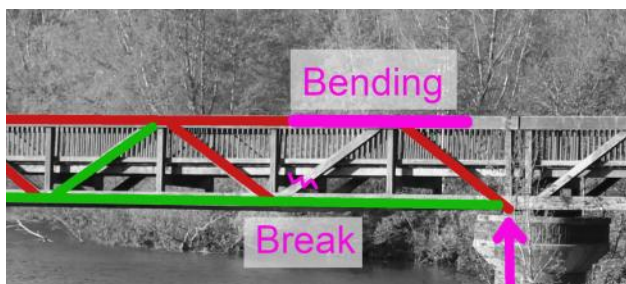
Analysing Bridges

There are many different types of bridge and they work in different ways. This is a truss bridge, which means that it is a series of triangular sections working together. Each component is either in compression (being squashed from the ends) or in tension (being pulled from the ends). Here is a simplified diagram for part of our bridge:



In this design the vertical members are mostly there to support the deck so the forces they carry are relatively small. The strength of the structure comes from the triangles: even if all the joints are pins (hinges) the truss will be rigid. In fact we could replace all the green bits with wires and all the red bits with loose stacks of wooden bricks and it would still work (until the wind blows, but that's another story)!

In our bridge, the root cause of the problem seems to be a rotten diagonal that has pulled out of its lower joint.



Now we have a parallelogram where we should have two triangles, and parallelograms are much weaker than triangles. If this really



Upper structural member: split and bending



Failed diagonal

were a simple pin-jointed structure it would instantly collapse into the river. Fortunately there are some other things there to hold it up. The first vertical is now in tension but it was not designed to carry this much load, so it has pulled the top beam apart. What we are left with is a mess: some members have bending loads, some are twisting, and the forces in others may even have reversed. It is well beyond my ability to analyse and it certainly isn't safe!

Repairing the Bridge

So what next? This bridge was originally assembled on flat ground and lifted into place by a crane standing on the dry riverbed. It would be very hard to get a big crane close enough now. Another approach would be to lift the whole span from underneath using a barge or floating pontoon. The problem again is access: there is a weir between this bit of the Jubilee River and the main Thames so the barge would have to be brought in by crane... How would you do it? It's a puzzle, and it will be very interesting to watch what actually happens!

Then there is the question of what the repair looks like. The existing structure is too badly damaged to re-use, and the highways authority (BUA) has proposed two rather ugly replacement options. Can we persuade them to do something more elegant, like the graceful footbridge across to Boulders Island? Write to your councillors and let them know your views...

Andrew Findlay

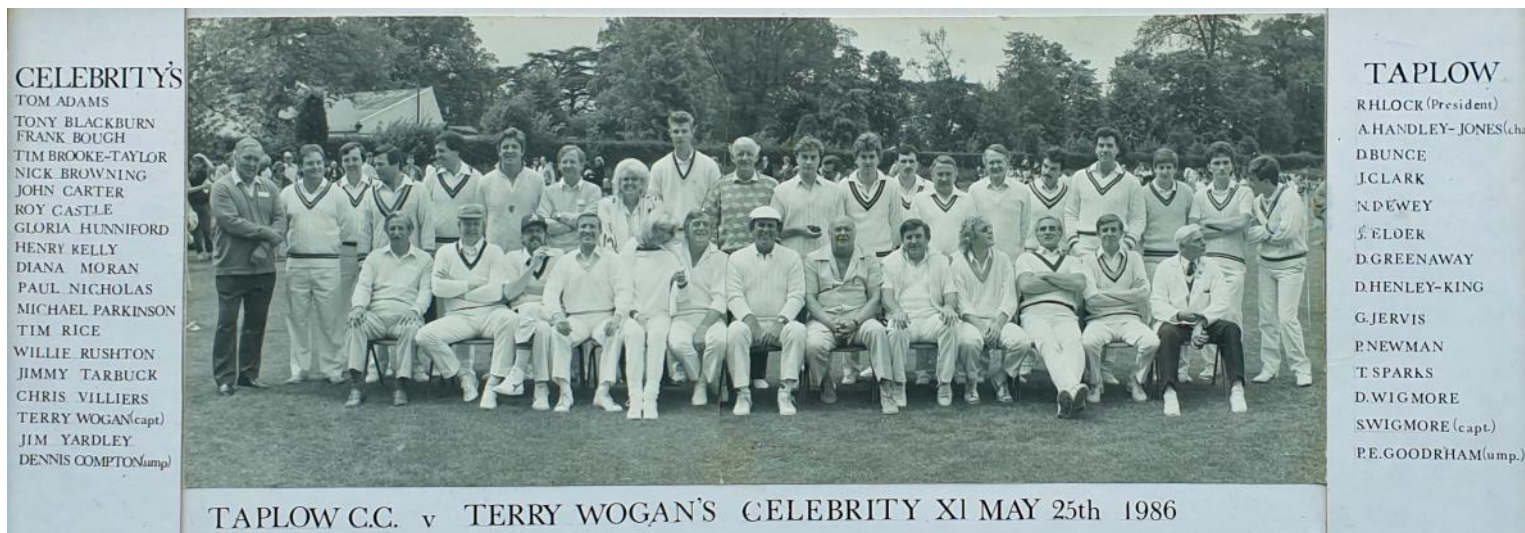
Taplow on Film

Taplow remains in demand for filming. Following the shooting of episodes of *Endeavour*, RTE are making a documentary about Terry Wogan and in September visited Taplow Cricket Club to film an interview with Henry Kelly – seen in this report of a Celebrity cricket match in 1986 captained by Terry Wogan



Stephen Daghish

Henry Keller with Marty Whelan of RTE



CELEBRITYS

- TOM ADAMS
- TONY BLACKBURN
- FRANK BOUGH
- TIM BROOKE-TAYLOR
- NICK BROWNING
- JOHN CARTER
- ROY CASTLE
- GLORIA HUNNIFORD
- HENRY KELLY
- DIANA MORAN
- PAUL NICHOLAS
- MICHAEL PARKINSON
- TIM RICE
- WILLIE RUSHTON
- JIMMY TARBUCK
- CHRIS VILLIERS
- TERRY WOGAN(capt)
- JIM YARDLEY
- DENNIS COMPTON(ump)

TAPLOW

- RHLOCK (President)
- A.HANDLEY-JONES(chair)
- DBUNCE
- J.CLARK
- N.DEWEE
- G.FLOER
- D.GREENAWAY
- D.HENLEY-KING
- G.JERVIS
- P.NEWMAN
- T.SPARKS
- D.WIGMORE
- SWIGMORE (capt)
- P.E.GOODRHAM(ump)

TAPLOW C.C. v TERRY WOGAN'S CELEBRITY XI MAY 25th 1986

Politics in Taplow?

We of course absolutely avoid party politics and the wider political scene but there are things that we should cover.

Firstly congratulations to our three new ward councillors for the Buckinghamshire Unitary Authority – George Sandy, Paul Kelly and Kirsten Ashman. It can only be helpful that two of them actually live in Taplow.

Second, we record some changes at Taplow Parish Council:

After a decade of service Hilda Holder has stepped down as our Parish Clerk. She has supported us all with unfailing humour and great competence and we are sorry to see her go. Thank you Hilda. We welcome Ruth Senior in her stead. One of Ruth's early tasks is to support the welcome re-opening of the Village Hall to the Playgroup and other users after the pandemic close-down. TPC will appreciate the recovery of its income stream, loss of which caused a range of expenditures to be curtailed.

Following the May elections TPC now has two members of the Green Party on board (Zoe



Ruth Senior

Hatch and Rachel Horton-Kitchlew) and it will be interesting to see what impact this may have. They have set up a Taplow Working Party for the Environment (at the time of writing the task is to find a suitable mnemonic!). Although not a parish council working party they update TPC on relevant matters and TPC funded the Bee Squared project proposed by them.

Roger Worthington

The Friends of St Nicolas Church



The *Friends* are playing their part in our generation as custodians of this special place which is so important for the well-being of the people who live here. One aspiration in the current generation is to open the church more during the week. Whenever it is open, people often call in to enjoy its calmness and peace. Our Parish Church was bequeathed to the whole community – those of faith and those of none. It means different things to different people: "it's where I was married", "it's where my Mum is buried", "it's where I go on Sundays", "it's where our school has special services", "It's where I see Taplow Youth Choirs", "I see the spire and I know I'm home". Whatever our parish church means to you, you too can register as a Friend and join people both within our community and increasingly beyond for whom it has special significance. As a Friend, you receive a quarterly newsletter telling you about the current work of the church, you will be invited to the

Friends' Annual Event and other special occasions during the year and you will be joining the wider community in support of our beautiful church now and in the future.

Go to st-nicolas-taplow.org/the-friends/

The church has also launched a number of community facilities:

- **Taplow Tots and Tea** – Wednesday 9:30-11:30 for babies, toddlers and carers, with a story and song.
- **Snics Snacks** – Friday 14:30 – 15:30 a range of healthy snacks and drinks for school children– free but donations welcome.
- **Coming soon – Hope Café** for those suffering bereavement or loss. **Café Cinema** for monthly new releases and family films.

Jim Oliver

Tidy up Taplow June 6 2021

We had great weather for the first Tidy up Taplow since the Covid19 restrictions. Camp was set up outside the village hall and litter pickers, bags and bag hoops were plentiful. Bucks County Council were generous with equipment which made the exercise more fun and less back breaking for the participants. The society bought a supply of Hi-viz vests that had their first outing. Essential for clearing narrow lanes and the A4, they are also a great shout out for the society.

Mike Turner had drawn up a Taplow map and planned out 14 routes. Copies were distributed so people stuck to their chosen route and there was no overlap. Tony Harding had already cleared the area on his way to join us and remarked on the

number of masks he found. Roger Worthington opted for the A4 stretch which he reported was far less littered than last time! Maybe the general public is getting the message? 20 full bin bags were collected in total. Quite a bit down on 2019 but we had less volunteers this time. Given that we are only just coming out of a lockdown situation, I really appreciated people's special effort to come along. All was cleared up and stacked away by 1pm, just as the weather took a turn for the worse.

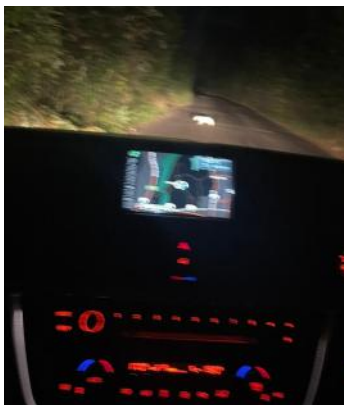
See you next year for a super speedy litter pick and a great social event in celebration to thank you.

Jacqueline Turner



Lincoln's End

Remembering Lincoln Lee



Badger!

NL 114 referred to the secret nature of Taplow, keeping its wonders hidden.

One of its well-hidden denizens was caught recently out and about. Apparently a long term family in the village. We avoid embarrassing him as a local celebrity by not revealing his sett address nor the paparazzi involved. Albino badgers are extremely rare, as are indeed most albinos of any species. (No letters from polar bears thank you).



Nigel Smales

Joy Marshall

If you want to know – Just Ask

Workmen are endlessly seen doing mysterious things on our roads that we sometimes wonder about but are too diffident to enquire. Joy Marshall is our fearless local interrogator of all these activities.

"What are you doing? Do you have permission?"

"We are investigating moving the water services so that we can widen the A4". Did anyone at TfB tell the parish council (or anyone?). So, Joy, please keep asking.

Dining Out

Although sadly we have had no Village Green Party for two years, our assets

have not been idle. The aspects of lockdown relating to dining and drinking have weighed heavily on the Oak and Saw, with a period where dining was only permitted outdoors. The vagaries of the English weather left Ian and Karen with (more!) problems. Happily the problem was eased by HTS loaning our marquee to be erected in the Oak and Saw garden where it has served many of us as shelter for some months. With a return to near normality it was taken down before heading along the road to support the Cedar Chase annual garden event and then returning to the barn to await the return of the VGP.

Ian and Karen have kindly made a donation to the Society.



Ian Burne

Taplow Station

Although full Elizabeth Line operation is still only a distant promise, Taplow is now clearly an extension of London with its new TfL signage and gates ensuring ticket only access. The excellent news is that at the MMPA AGM, It was announced that there is an 'overpass' ticket to allow pedestrians across the railway bridge, a vital facility when Station Road has its regular floods, as well as a 'trainspotters' ticket to allow platform access at so much an hour. Although the station is now badged 'TfL' – Transport for London – the Elizabeth Line will be operated by a company called MTR and the station will be so rebadged when the Elizabeth Line finally opens.



Roger Worthington